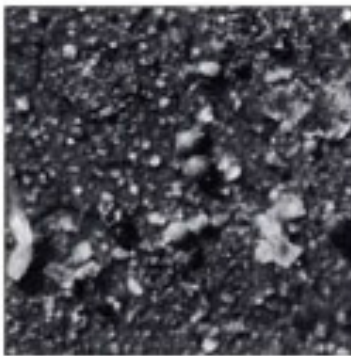


ROT FILTER

For Fuel Oil of Diesel Engine

C graded fuel oil for the marine diesel engine strengthens to deteriorate tendency. Wear-out at the early stage of the plunger barrel and abnormal wear-out of the ring liner are reported along with it. These are due to an increase of general sludge and alumina and the silica catalyst fines that remains in the Fluid Catalytic Cracking Oil (FCC oil).



Photomicrograph of Fuel oil

Spherical FCC particles with general sludge.



Picture of plunger barrel

It became loose by wear.



Picture of nozzle tip

The hole-diameter was widen by wear.

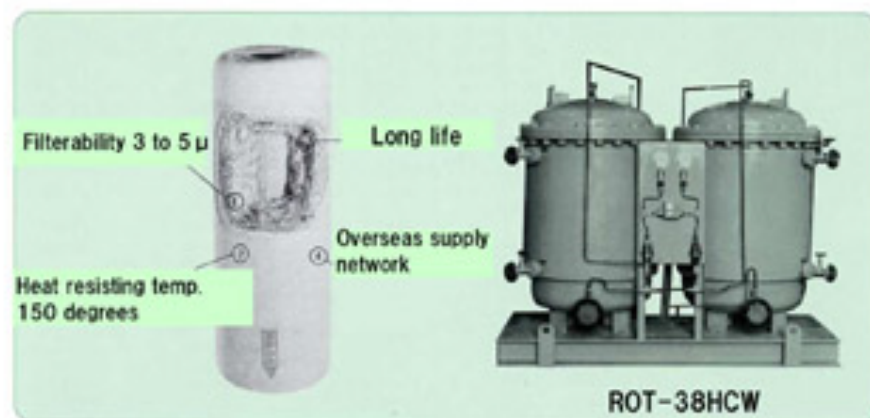


Photograph of cylinder liner

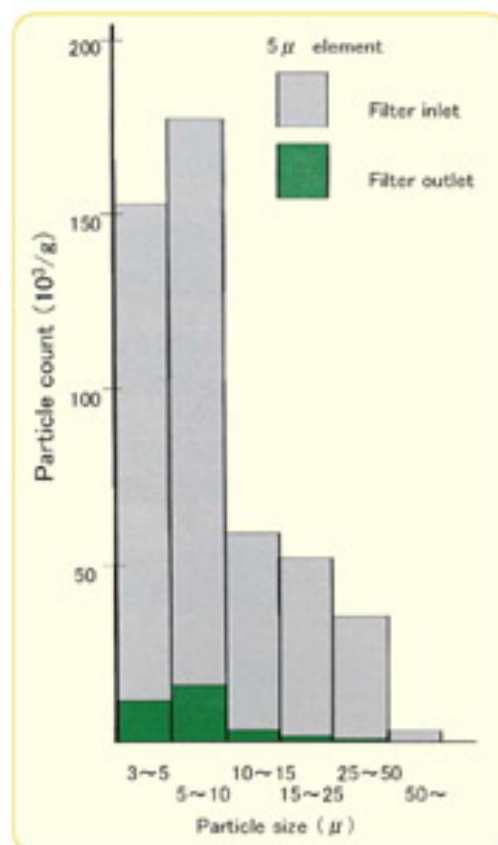
The FCC particles and abrasion.

As ROT Filter securely catches five-micron particles, the wear of the injection system is greatly decreased, and it is useful for the improvement of combustion such as extending the life of exhaust valves etc. Therefore, continuous usage of ROT Filter is recommendable for main and generator engines that use low quality fuel oil. The element is a disposable type made from cotton yarn and the excelsior. The life of element is 1,600 hours on the average when the pressure gauge reaches 0.11MPa.

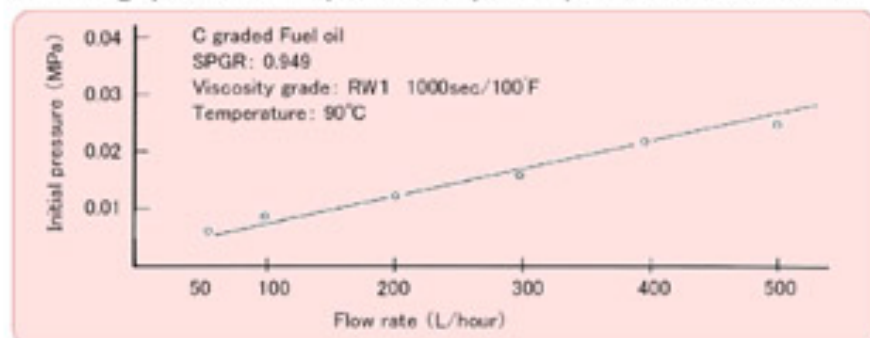
[ROT Element]



[Filterability]



[Throughput oil and pressure per 1 piece of element]



[Specification]

Model		ROT-7HCS	ROT-10HCS	ROT-14HCS	ROT-22HCS	ROT-38HCS
Filterability		5 μ (It can remove 5 μ particles over 90%)				
Flow rate (m³/h)		1.4	2.0	2.8	4.4	7.6
Dimension (mm)	Height	820	1250	1250	1280	1340
	Length	550	550	550	710	820
	Depth	510	480	510	700	800
Overhaul height from floor (mm)		1200	1620	1620	1600	1600
Connection JIS16K Flange	In/outlet	25A	25A	50A	50A	65A
	Drain	25A	25A	25A	25A	25A
	Steam	20A	20A	20A	20A	20A
Weight (kg)		200	210	260	406	625
Capacity (L)		43	62	75	130	192

Note: If the flow rate is more than 7.6m³/h, the duplex unit is to be supplied.

Standard accessories : Pressure gauge, Gauge board, Air vent valve, Steam jacket, Heat insulating board

Optional accessories : Differential pressure switch, Oil in/outlet valve, safety valve



HEAD OFFICE
1-8-12, Okina-machi, Naka-ku, Yokohama city
Kanagawa 231-0026 Japan
TEL.045-841-4041 FAX.045-881-5084
<http://www.ameroid.co.jp>

DOMESTIC BRANCH AGENT
NAGOYA
KOBE
FUKUJYAMA
MABARI
FUKUJOKA